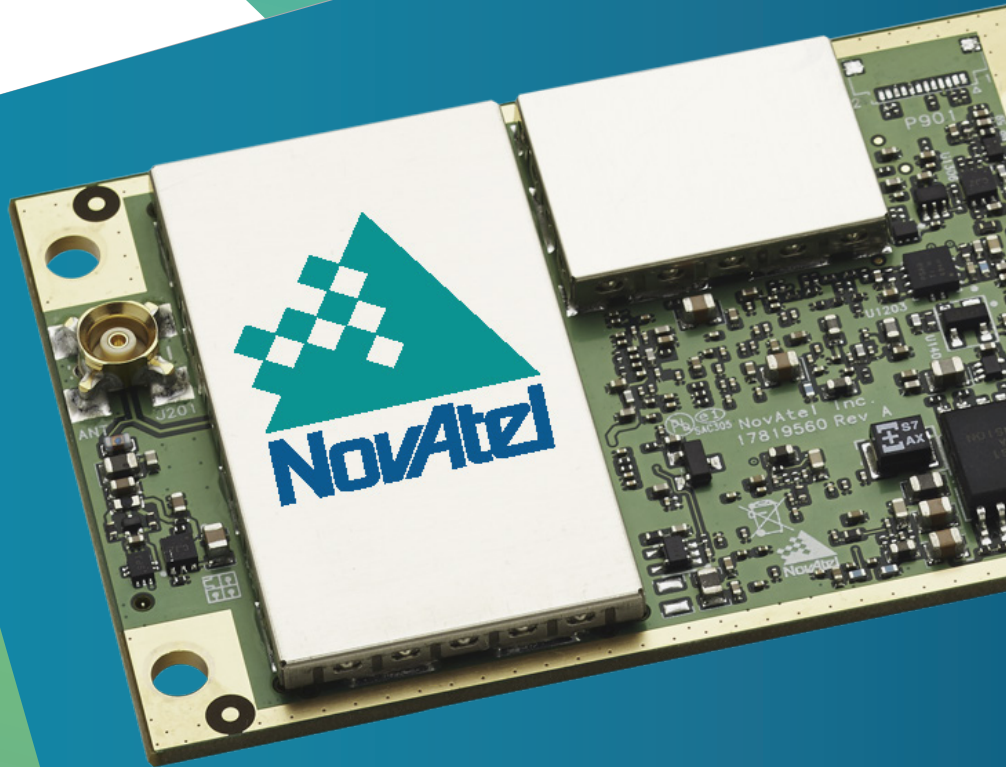


OEM7[®] Receivers

Setting the standard in
positioning and performance



Hexagon | NovAtel®

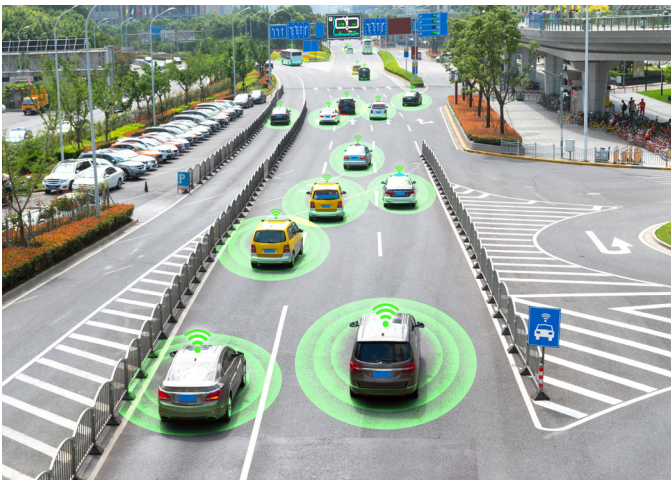
OEM7® GNSS Receivers

NOVATEL'S OEM7 GNSS RECEIVERS SET THE STANDARD IN POSITIONING PERFORMANCE, FEATURES AND EASE OF INTEGRATION.

Leveraging six previous generations of precise positioning know-how, the OEM7 incorporates innovative capabilities and features to enhance positioning reliability, accuracy and availability.

Cornerstones of the OEM7 family include advanced interference detection and mitigation, with L-Band and SPAN® GNSS+INS functionality on every receiver.

SPAN Technology



NovAtel's SPAN technology provides continuous 3D positioning, velocity and attitude determination even when satellite reception may be compromised for short periods of time.

SPAN integrates Inertial Measurement Units (IMUs) with OEM7 receivers to create a tightly coupled GNSS+INS solution at data rates up to 200 Hz.

The accuracy of SPAN products can be optimized with best-in-class post-processing software from our Waypoint® Software.

To learn more about SPAN technology, please visit novatel.com/span

CORRECT Positioning

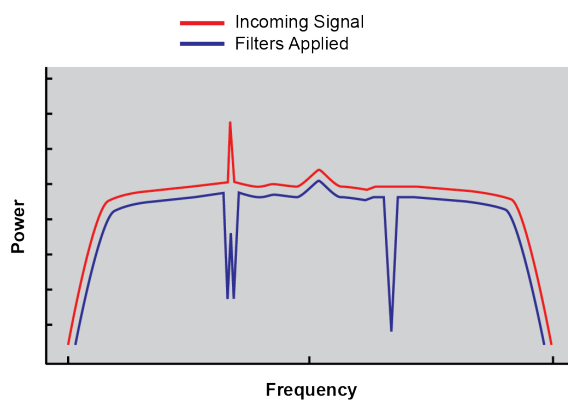


NovAtel CORRECT® is state-of-the-art in positioning algorithms. It optimizes corrections from Real Time Kinematic (RTK), Precise Point Positioning (PPP), Space Based Augmentation Systems (SBAS) and Differential Global Navigation Satellite Systems (DGNSS).

NovAtel CORRECT ensures you receive the positioning accuracy needed for your application, whether that is meter, decimeter or centimeter-level.

To learn more about NovAtel CORRECT positioning, please visit novatel.com/correct

Interference Toolkit

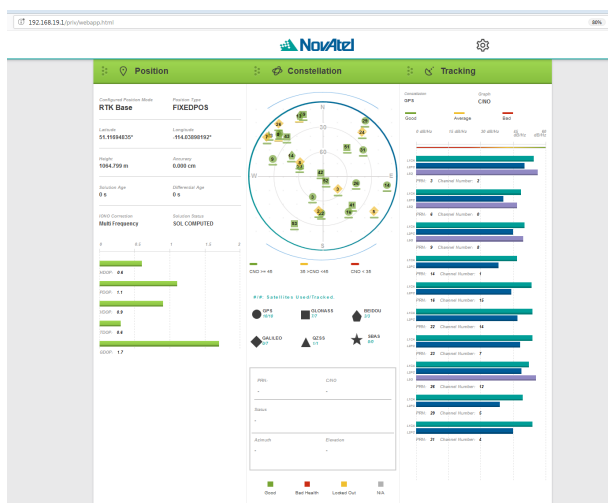


In today's crowded frequency spectrum, potential for interference is high.

The Interference Toolkit provides any operator on-demand actionable intelligence by measuring the radio frequency spectrum levels, simplifying visualization, monitoring, quantifying and even mitigating interference sources.

To learn more about the Interference Toolkit, please visit novatel.com/solutions/interference-mitigation/

Web UI



Web UI is a website user interface that configures and monitors receiver activities all at a glance. With it's new look for OEM7 products, and ease to connect over Ethernet, all your information is available together. It comes with the following main features:

- Position configurations and display status
- Logging control
- Storage management
- Mobile platform support
- Firmware upgradeable through Web UI

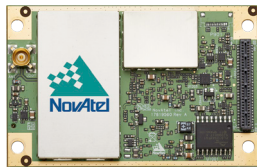
OEM7 GNSS Series Cards



OEM7600™

Multi-frequency GNSS receiver delivers precise positioning in an extremely compact form factor

Size: 35 × 55 × 13 mm
Weight: 31 g



OEM7700™

Multi-frequency GNSS receiver delivers precise positioning and simplifies integration

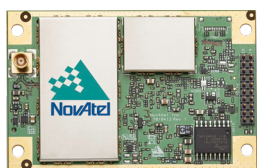
Size: 46 × 71 × 8 mm
Weight: 31 g



OEM7720™

Dual-antenna, multi-frequency GNSS receiver delivers robust heading and positioning

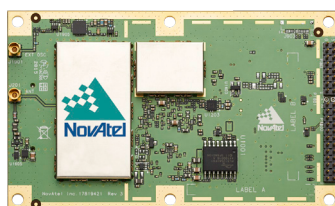
Size: 46 × 71 × 8 mm
Weight: 29 g



OEM719™

Multi-frequency GNSS receiver includes all modern signals and is backward compatible with the OEM615/OEM617 receiver

Size: 46 × 71 × 11 mm
Weight: 31 g



OEM729™

Multi-frequency GNSS receiver includes all modern signals and is backward compatible with the OEM628 receiver

Size: 60 × 100 × 9 mm
Weight: 48 g

POSITIONING ACCURACY (LEVEL)

Meter (RMS/95%)		Sub Meter (RMS/95%)		Centimeter (RMS/95%)			
Single Point L1	Single Point L1/L2	SBAS	DGPS	TerraStar-L™ ^a	TerraStar-C PRO™ ^a	TerraStar-X™ ^a	RTK
1.5 m 2.5 m	1.2 m 2.4 m	60 cm 120 cm	40 cm 80 cm	40 cm 50 cm	2.5 cm 3 cm	2 cm 2.5 cm	1 cm + 1 ppm 2.5 cm + 1 ppm
1.5 m 2.5 m	1.2 m 2.4 m	60 cm 120 cm	40 cm 80 cm	40 cm 50 cm	2.5 cm 3 cm	2 cm 2.5 cm	1 cm + 1 ppm 2.5 cm + 1 ppm
1.5 m 2.5 m	1.2 m 2.4 m	60 cm 120 cm	40 cm 80 cm	40 cm 50 cm	2.5 cm 3 cm	2 cm 2.5 cm	1 cm + 1 ppm 2.5 cm + 1 ppm
1.5 m 2.5 m	1.2 m 2.4 m	60 cm 120 cm	40 cm 80 cm	40 cm 50 cm	2.5 cm 3 cm	2 cm 2.5 cm	1 cm + 1 ppm 2.5 cm + 1 ppm
1.5 m 2.5 m	1.2 m 2.4 m	60 cm 120 cm	40 cm 80 cm	40 cm 50 cm	2.5 cm 3 cm	2 cm 2.5 cm	1 cm + 1 ppm 2.5 cm + 1 ppm

a. Requires subscription to TerraStar® data service. Subscriptions available from NovAtel.
b. Typical value, GPS L1 only.

SOLUTIONS

+	+	+	+	+	+	ALIGN® Heading and Relative Positioning
						Integrated ALIGN Heading
+	+	+	+	+	+	NovAtel CORRECT
+	+	+	+	+	+	GLIDE®
+	+	+	+	+	+	RAIM
+	+	+	+	+	+	SPAN
+	+	+	+	+	+	Interference Toolkit

SIGNAL TRACKING

L1 C/A, L1C, L2C, L2P, L5	L1 C/A, L1C, L2C, L2P, L5	L1 C/A, L1C, L2C, L2P, L5	L1 C/A, L1C, L2C, L2P, L5	L1 C/A, L1C, L2C, L2P, L5	L1 C/A, L1C, L2C, L2P, L5	GPS
L1 C/A, L2 C/A, L2P, L3, L5	L1 C/A, L2 C/A, L2P, L3, L5	L1 C/A, L2 C/A, L2P, L3, L5	L1 C/A, L2 C/A, L2P, L3, L5	L1 C/A, L2 C/A, L2P, L3, L5	L1 C/A, L2 C/A, L2P, L3, L5	GLONASS
E1, E5 AltBOC, E5a, E5b, E6	E1, E5 AltBOC, E5a, E5b, E6	E1, E5 AltBOC, E5a, E5b, E6	E1, E5 AltBOC, E5a, E5b, E6	E1, E5 AltBOC, E5a, E5b, E6	E1, E5 AltBOC, E5a, E5b, E6	Galileo
B1I, B1C, B2I, B2a, B3I	B1I, B1C, B2I, B2a, B3I	B1I, B1C, B2I, B2a	B1I, B1C, B2I, B2a, B3I	B1I, B1C, B2I, B2a, B3I	B1I, B1C, B2I, B2a	BeiDou
L1 C/A, L1C, L2C, L5, L6	L1 C/A, L1C, L2C, L5, L6	L1 C/A, L1C, L2C, L5	L1 C/A, L1C, L2C, L5, L6	L1 C/A, L1C, L2C, L5, L6	L1 C/A, L1C, L2C, L5	QZSS
L5	L5	L5	L5	L5	L5	NavIC (IRNSS)
L1, L5	L1, L5	L1, L5	L1, L5	L1, L5	L1, L5	SBAS
Up to 5 channels	Up to 5 channels	Up to 5 channels	Up to 5 channels	Up to 5 channels	Up to 5 channels	L-Band
555	555	555	555	555	555	Number of Channels

INTERFACES

2 LVCMOS, 1 RS-232/RS-422	3 LVCMOS	5 LVCMOS	5 LVCMOS	5 LVCMOS	5 LVCMOS	Serial Ports
1 Device	1 Device	1 Device, 1 Host	1 Device, 1 Host	1 Device, 1 Host	1 Device, 1 Host	USB Ports
2	2	2	2	2	2	CAN Ports
1		1	1	1	1	Ethernet
100 Hz	100 Hz	100 Hz	100 Hz	100 Hz	100 Hz	Maximum Data Rate
+3.3 VDC [±5%]	+3.3 VDC [±5%]	+3.0 to 5.0 VDC	+3.3 VDC [±5%]	+3.3 VDC [±5%]	+3.3 VDC [±5%]	Input Voltage
0.9 W	0.9 W	1.6 W	0.9 W	0.9 W	0.9 W	Power Consumption ^b

OEM7 GNSS Series Enclosures



PwrPak7®

Rugged, compact enclosure delivers scalable GNSS solutions with internal storage and GNSS+INS options

Size: 147 × 125 × 55 mm
Weight: 500 g



PwrPak7D™

Rugged, compact, dual antenna enclosure delivers scalable GNSS solutions with internal storage and GNSS+INS options

Size: 147 × 125 × 55 mm
Weight: 500 g

POSITIONING ACCURACY (LEVEL)

Meter (RMS/95%)		Sub Meter (RMS/95%)		Centimeter (RMS/95%)		
Single Point L1	Single Point L1/L2	SBAS	DGPS	TerraStar-L™ ^a	TerraStar-C PRO™ ^a	TerraStar-X™ ^a
1.5 m 2.5 m	1.2 m 2.4 m	60 cm 120 cm	40 cm 80 cm	40 cm 50 cm	2.5 cm 3 cm	2 cm 2.5 cm
						RTK
						1 cm + 1 ppm 2.5 cm + 1 ppm
						1 cm + 1 ppm 2.5 cm + 1 ppm

a. Requires subscription to TerraStar® data service. Subscriptions available from NovAtel.
b. Typical value, GPS L1 only.

SOLUTIONS

+	+	ALIGN® Heading and Relative Positioning
+		Integrated ALIGN Heading
+	+	NovAtel CORRECT
+	+	GLIDE®
+	+	RAIM
+	+	SPAN
+	+	Interference Toolkit

SIGNAL TRACKING

L1 C/A, L1C, L2C, L2P, L5	L1 C/A, L1C, L2C, L2P, L5	GPS
L1 C/A, L2 C/A, L2P, L3, L5	L1 C/A, L2 C/A, L2P, L3, L5	GLONASS
E1, E5 AltBOC, E5a, E5b	E1, E5 AltBOC, E5a, E5b, E6	Galileo
B1I, B1C, B2I, B2a	B1I, B1C, B2I, B2a, B3I	BeiDou
L1 C/A, L1C, L2C, L5	L1 C/A, L1C, L2C, L5, L6	QZSS
L5	L5	NavIC (IRNSS)
L1, L5	L1, L5	SBAS
Up to 5 channels	Up to 5 channels	L-Band
555	555	Number of Channels

INTERFACES

1 RS-232, 2 RS-232/RS-422	1 RS-232, 2 RS-232/RS-422	Serial Ports
1 Device, 1 Host	1 Device, 1 Host	USB Ports
1	1	CAN Ports
1	1	Ethernet
+	+	Wi-Fi
16 GB	16 GB	Memory
100 Hz	100 Hz	Maximum Data Rate
+9 to +36 VDC	+9 to +36 VDC	Input Voltage
3.95 W	3.25 W	Power Consumption ^b



About Hexagon | NovAtel®

Hexagon is a global leader in sensor, software and autonomous solutions. We are putting data to work to boost efficiency, productivity, and quality across industrial, manufacturing, infrastructure, safety, and mobility applications. Our technologies are shaping urban and production ecosystems to become increasingly connected and autonomous — ensuring a scalable, sustainable future.

NovAtel, part of Hexagon, is a global technology leader, pioneering end-to-end solutions for assured positioning for land, sea, and air. NovAtel designs, manufactures and sells high precision positioning technology developed for efficient and rapid integration. Its solutions are empowering intelligent positioning ecosystems in vital industries that depend on the ability to tackle the most complex challenges in the most demanding environments. Learn more at novatel.com.

Hexagon (Nasdaq Stockholm: HEXA B) has approximately 20,000 employees in 50 countries and net sales of approximately 3.8bn EUR. Learn more at hexagon.com and follow us @HexagonAB.

Novatel Inc.
Hexagon Calgary Campus | 10921 14th St. NE | Calgary, Alberta, Canada T3K 2L5

Contact Information
US & Canada 1-800-NOVATEL or 403-295-4900
China 0086-21-68882300 | Europe 44-1993-848-736 | SE Asia & Australia 61-400-883-601
Website: novatel.com | Email: sales@novatel.com

©2020 Novatel Inc. All rights reserved. NovAtel is part of Hexagon. All trademarks or servicemarks used herein are property of their respective owners. NovAtel makes no representation or warranty regarding the accuracy of the information in this publication. This document gives only a general description of the product(s) or service(s) offered by NovAtel, and, except where expressly provided otherwise, shall not form part of any contract. Such information, the products and conditions of supply are subject to change without notice.

Version 10
D21517 February 2020